



# Harnesses

# Maximise Worker Safety & Confidence

## Revolution Tower Harness

Part No: M1020056

A versatile harness with front and rear connections, ideal for work positioning and confined space rescue.

- Rear 400mm D ring extension
- Pelvic D rings for work positioning and confined space rescue loops
- ErgoArmor back shield protects from snap hook and lifeline injury
- Adjustable waist, chest, shoulder & leg straps
- Lumbar, buttock padding, and mesh membrane add comfort
- Comfortable, durable polyester/DuraFlex webbing
- Certified to AS/NZS 1891.1 2007

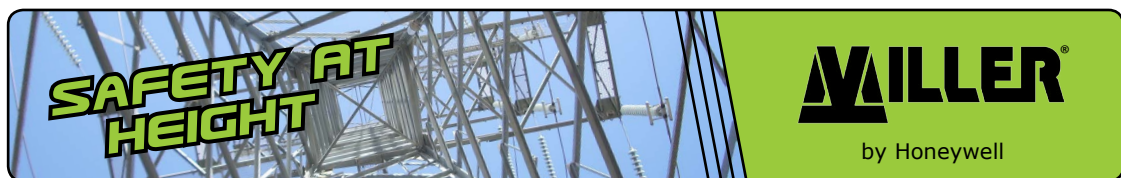
**Innovative harness design engineered with unique components and features to improve efficiency and safety**



ErgoArmor™ back shield    DualTech™ webbing    Quick connect buckles



TOWER REVOLUTION



## Tower Worker Harness

Part No: TOWER WORKER

The ultimate tower harness with multiple attachment points for compatibility with many applications.

- Frontal fall arrest attachment loops
- 300mm extended dorsal dee
- Confined space loops and work positioning side dees
- Label pack with lanyard parking ring stores harness documents
- Excellent UV and chemical resistance
- Lumbar and buttock padding equipped with tool loops
- Suited to electrical, ladder and tower work, tree pruning, EWP work, confined space and rescue applications
- Made from heavy duty lightweight polyester webbing in highly visible red and blue
- Certified to AS/NZS 1891.1 2007



TOWER WORKER

**Suited to electrical, ladder and tower work, tree pruning, EWP work, confined space and rescue applications**



## HEIGHT SAFETY & RESCUE KITS

Harness Accessories Also Available:

- Pole Strap & Lanyard
- Height Safety Connection Equipment
- Fall Restraint/Anchor Point
- Karabiners, Hooks & Connectors

